



K ◻ H R ◻
ITALY

missinglinks

NEW CAPSULE COLLECTION 2021

K ◻ H R ◻
ITALY

missinglinks

The new 2021 KOHRO Capsule

Like clear thoughts coming to mind and linking memories together, or carving new paths for future stories, the six items in the new **MISSING LINKS** capsule inspire interesting combinations with other fabrics in the collection and allow for new possibilities, inviting novel elegant ideas.

MISSING LINKS enriches the collection with elements that become the binding force among the other existing items, a testament to cross-creativity that opens up to different areas for inspiration.

The results are double-width fabrics in different fibers, weights and structures, for upholstery or curtains, for bed sets and accessories, created for residential or hospitality applications, where elegance prevails.

Heralds of unpretentiousness, ready to step up when combined with other fabrics.

The inspiration for the capsule stems from revisiting classic patterns

- such as chevron in **MONSIEUR** and the yarn-dyed mélange bouclé in **PAT** - rendered in an ethereal and fresh color palette suitable for soft furnishing.

Also, the evergreen stripes in **CANOTIER** are in perfect harmony with **TEATIME**, for exquisite bed sets or curtains in extraordinarily soft linen.

The attention to light and sheer fabrics comes to life in **PONENTINO** and **PENNICHELLA**, a very soft byssus and a linen gauze respectively,

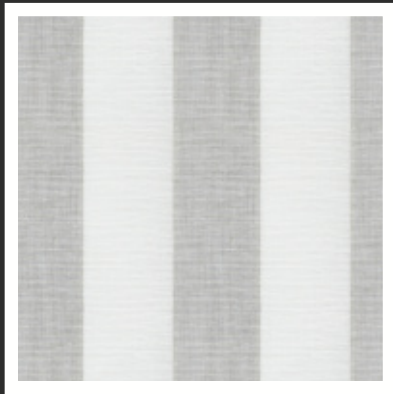
with an informal but decidedly noble look, thanks to a fluidly draped ruffle.

MISSING LINKS, meditative reflections that trigger a chain reaction of lively desires.



↓ PRESS KIT

missinglinks



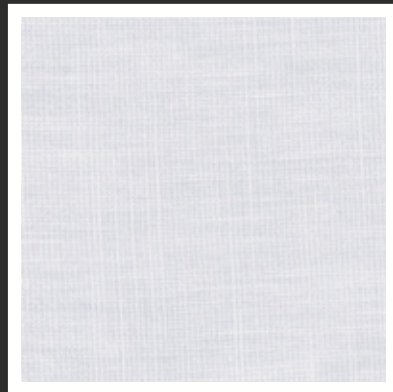
CANOTIER



MONSIEUR



PAT



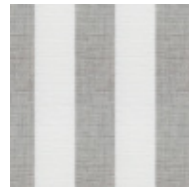
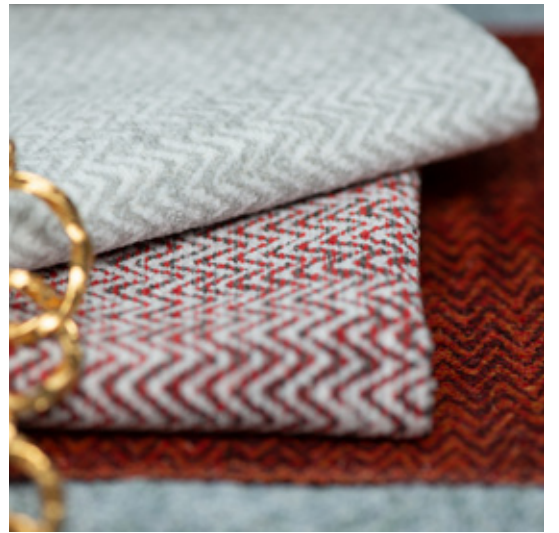
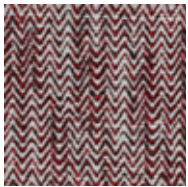
TEATIME



PENNICHELLA

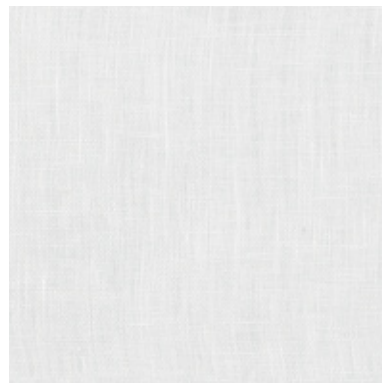
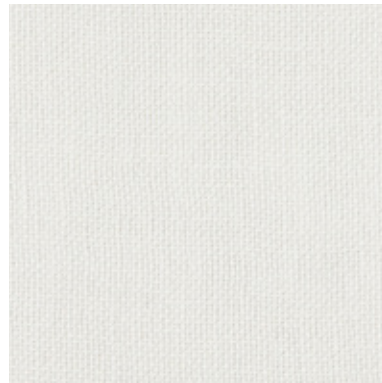


PONENTINO





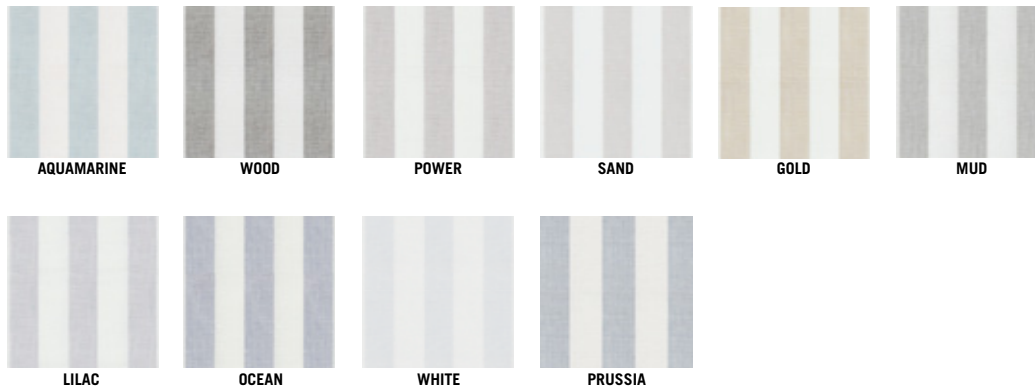




CANOTIER



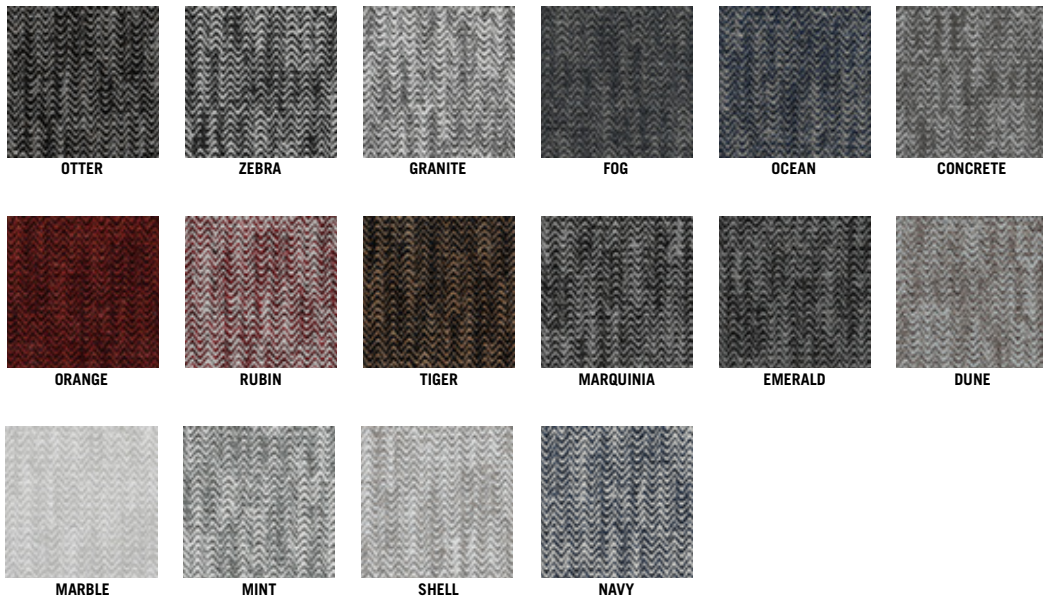
| | |
|--|--------------------|
| ITEM NAME | K0066360 CANOTIER |
| COMPOSITION | 74%LINEN 26%COTTON |
| WIDTH | 293 cm - 115" |
| MARTINDALE RUB TEST | — |
| RECOMMENDED USAGE | |
| CARE SYMBOLS | |
| NOTES | |
| <input checked="" type="checkbox"/> REVERSIBLE | |
| <input checked="" type="checkbox"/> DOUBLE WIDTH | |
| HOR. REP. | — |
| VERT. REP. | — |



MONSIEUR



| | |
|--|------------------------|
| ITEM NAME | KR066366 MONSIEUR |
| COMPOSITION | 80%POLYESTER 20%COTTON |
| WIDTH | 290 cm - 114" |
| MARTINDALE RUB TEST | 55.000 |
| RECOMMENDED USAGE | |
| CARE SYMBOLS | |
| NOTES | DOUBLE WIDTH |
| <input checked="" type="checkbox"/> REVERSIBLE | |
| <input checked="" type="checkbox"/> DOUBLE WIDTH | |
| HOR. REP. _____ | VERT. REP. _____ |



PAT



ITEM NAME KD066460 PAT

COMPOSITION 84%POLYESTER 16%COTTON

WIDTH 277 cm - 109"

MARTINDALE RUB TEST 55.000

RECOMMENDED USAGE

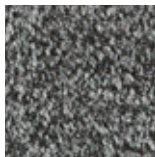
CARE SYMBOLS

NOTES

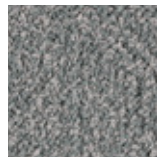
REVERSIBLE

DOUBLE WIDTH

HOR. REP. — VERT. REP. —



TUNDRA



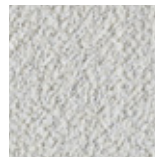
MINT



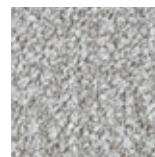
GREENFROST



CHAMPAGNE



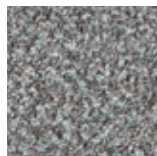
PEARL



SAND



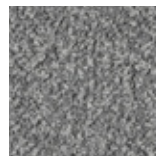
GREYTAUPE



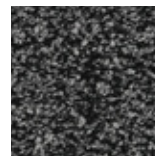
GRAVEL



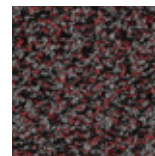
ROCK



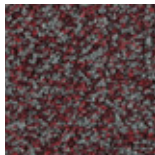
CONCRETE



COAL



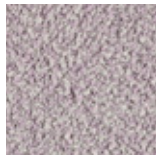
RED



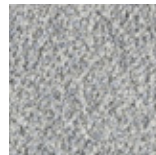
BRICKS



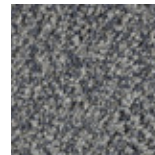
WISTERIA



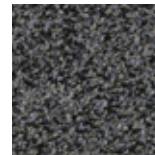
ROSE



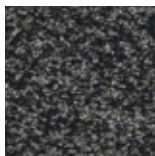
MIST



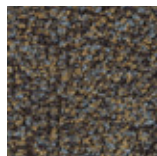
POLAR



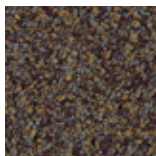
BLUE



WOODLAND

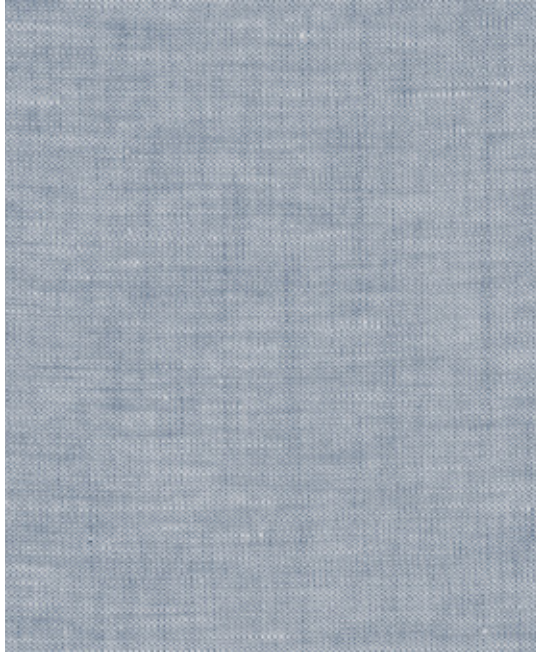


LICHEN



FOLIAGE

TEATIME



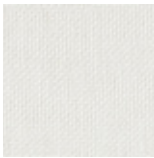
| | |
|--|--------------------|
| ITEM NAME | KC064882 TEATIME |
| COMPOSITION | 75%LINEN 25%COTTON |
| WIDTH | 290 cm - 114" |
| MARTINDALE RUB TEST | — |
| RECOMMENDED USAGE | |
| CARE SYMBOLS | |
| NOTES | |
| <input checked="" type="checkbox"/> REVERSIBLE | |
| <input checked="" type="checkbox"/> DOUBLE WIDTH | |
| HOR. REP. | — |
| VERT. REP. | — |



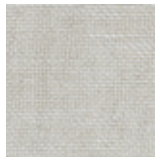
PENNICHELLA



| | |
|---------------------|----------------------|
| ITEM NAME | K0064677 PENNICHELLA |
| COMPOSITION | 100% LINEN |
| WIDTH | 290 cm - 114" |
| MARTINDALE RUB TEST | — |
| RECOMMENDED USAGE | |
| CARE SYMBOLS | |
| NOTES | DOUBLE WIDTH |
| HOR. REP. | — |
| VERT. REP. | — |



SOAP



RENA

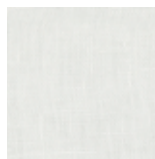
PONENTINO



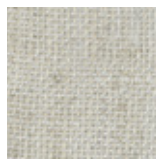
| | |
|---------------------|--------------------|
| ITEM NAME | KC064674 PONENTINO |
| COMPOSITION | 100% LINEN |
| WIDTH | 300 cm - 118" |
| MARTINDALE RUB TEST | — |
| RECOMMENDED USAGE | |
| CARE SYMBOLS | |
| NOTES | DOUBLE WIDTH |
| HOR. REP. | — |
| VERT. REP. | — |



SALE



SOAP





RENA

K H R
ITAL

marketing@kohro.it
phone: +39 035 741845

kohro.it

 @kohroitaly

 @kohroitaly

 WeChat