



The  
FOREST NETWORK

K  H R   
ITALY

K  H R   
ITALY



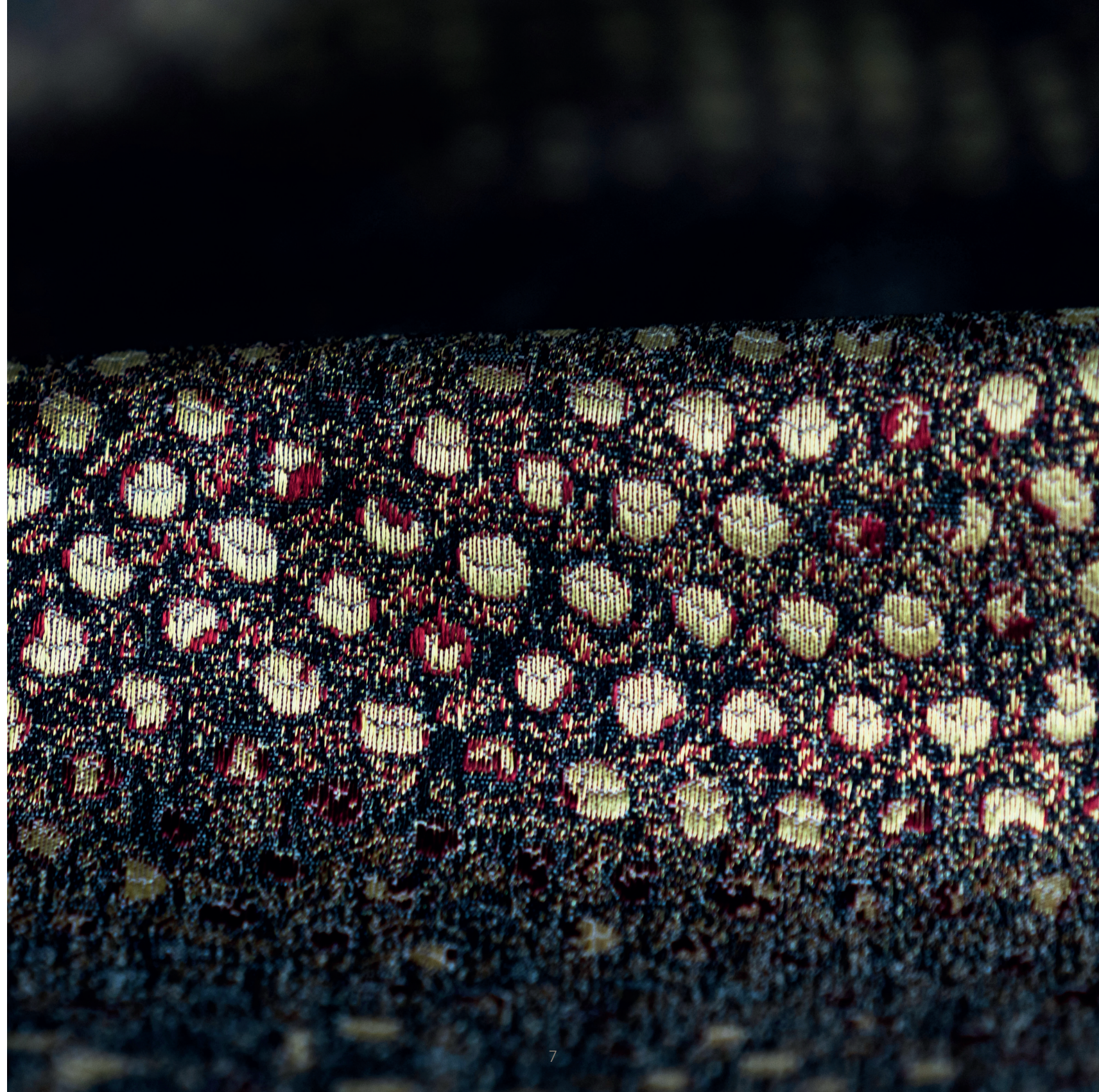
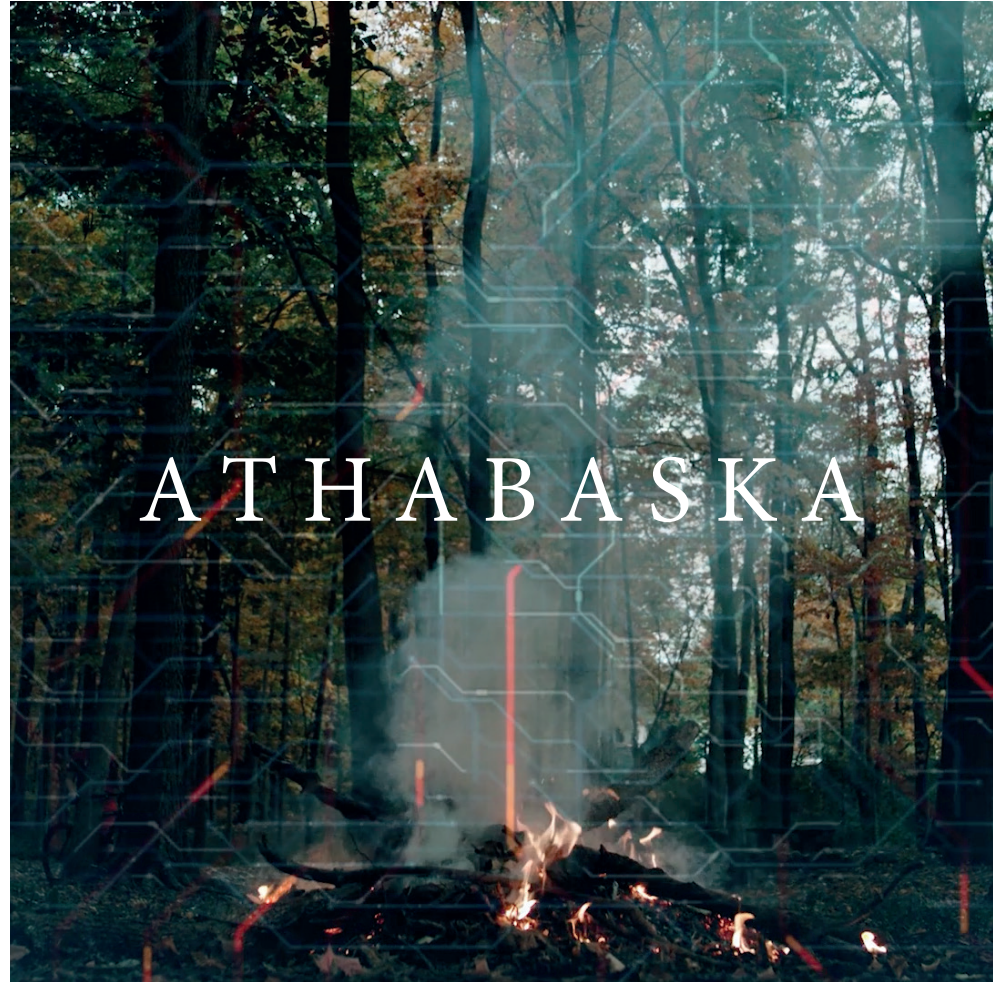
# The FOREST NETWORK

a balanced coexistence

This collection sets its eyes on the invisible that enlivens the forest. Small and large spaces where the natural world's intelligence interacts, where different creatures work together to strike a vital balance. Sensory connections and intertwined beings make up a complex, crowded but balanced social system, a community where every organism plays a precise role. KOHRO has carefully captured the patterns and marvelous color cues of this habitat, and detected the pulsating designs of this hidden intelligence relentlessly working to communicate and cooperate. A commendation for Nature's lively dynamism and what is essential to sustain life, which in nature coincides with an industrious and peaceful balance.

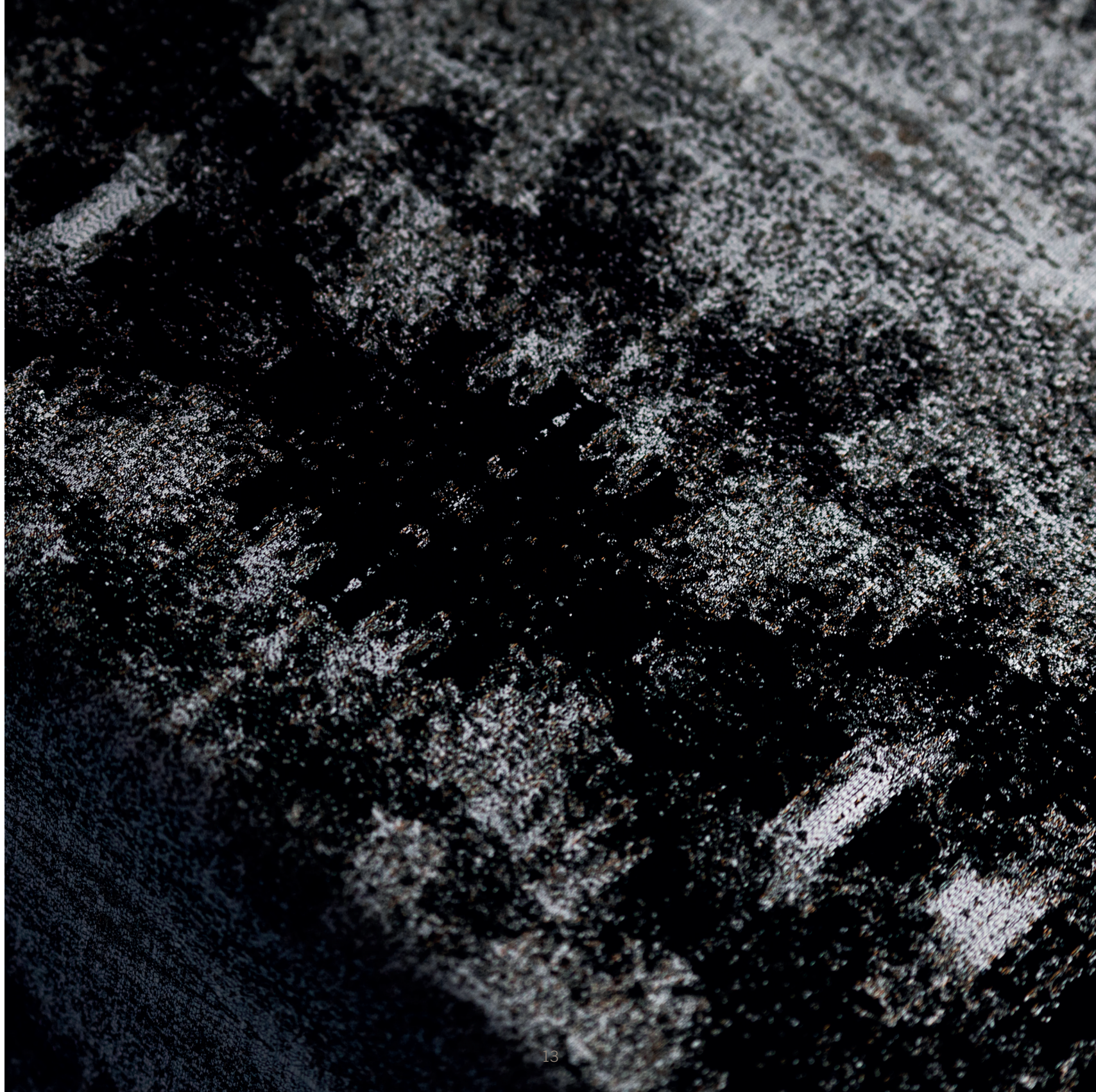
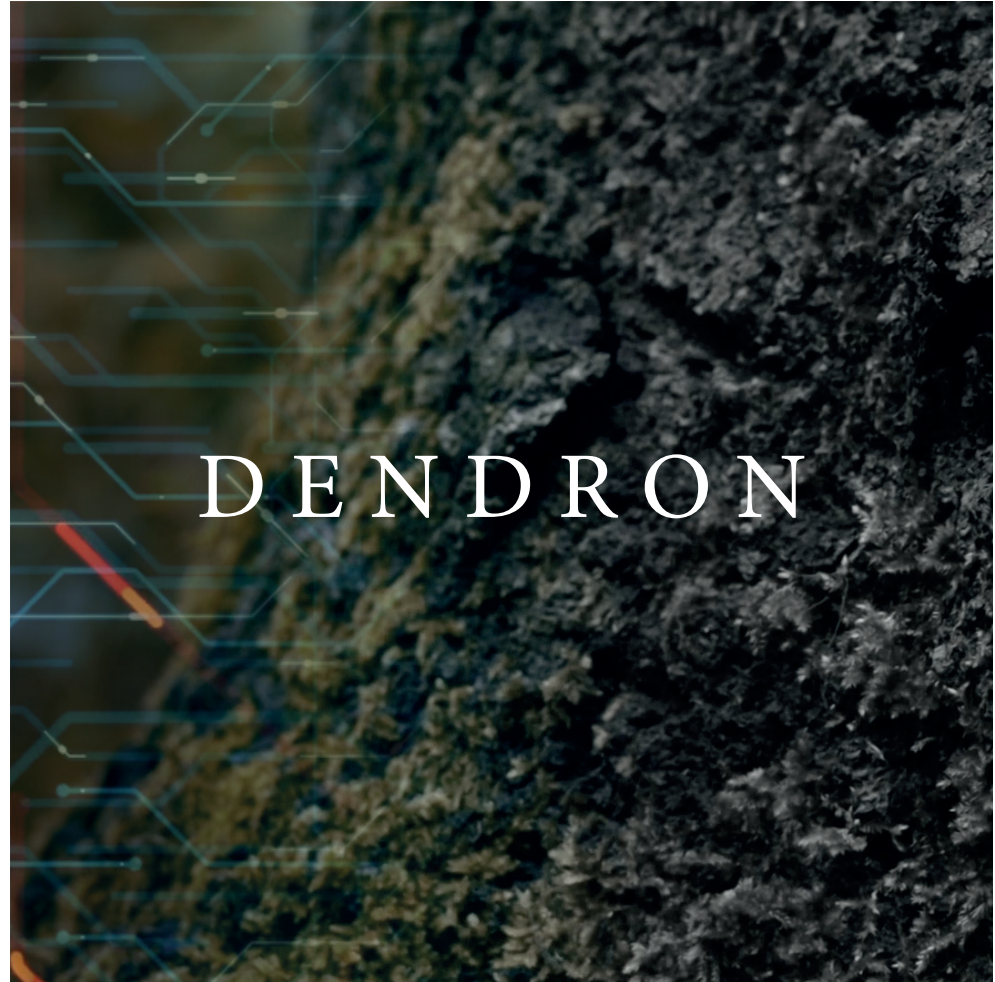
Fabrics in THE FOREST NETWORK collection have earthy tones dominating the scene and alternating with cold pink, emerald and turquoise accents, laced in contemporary patterns such as UMBRA, PANTANAL, and DENDRON.

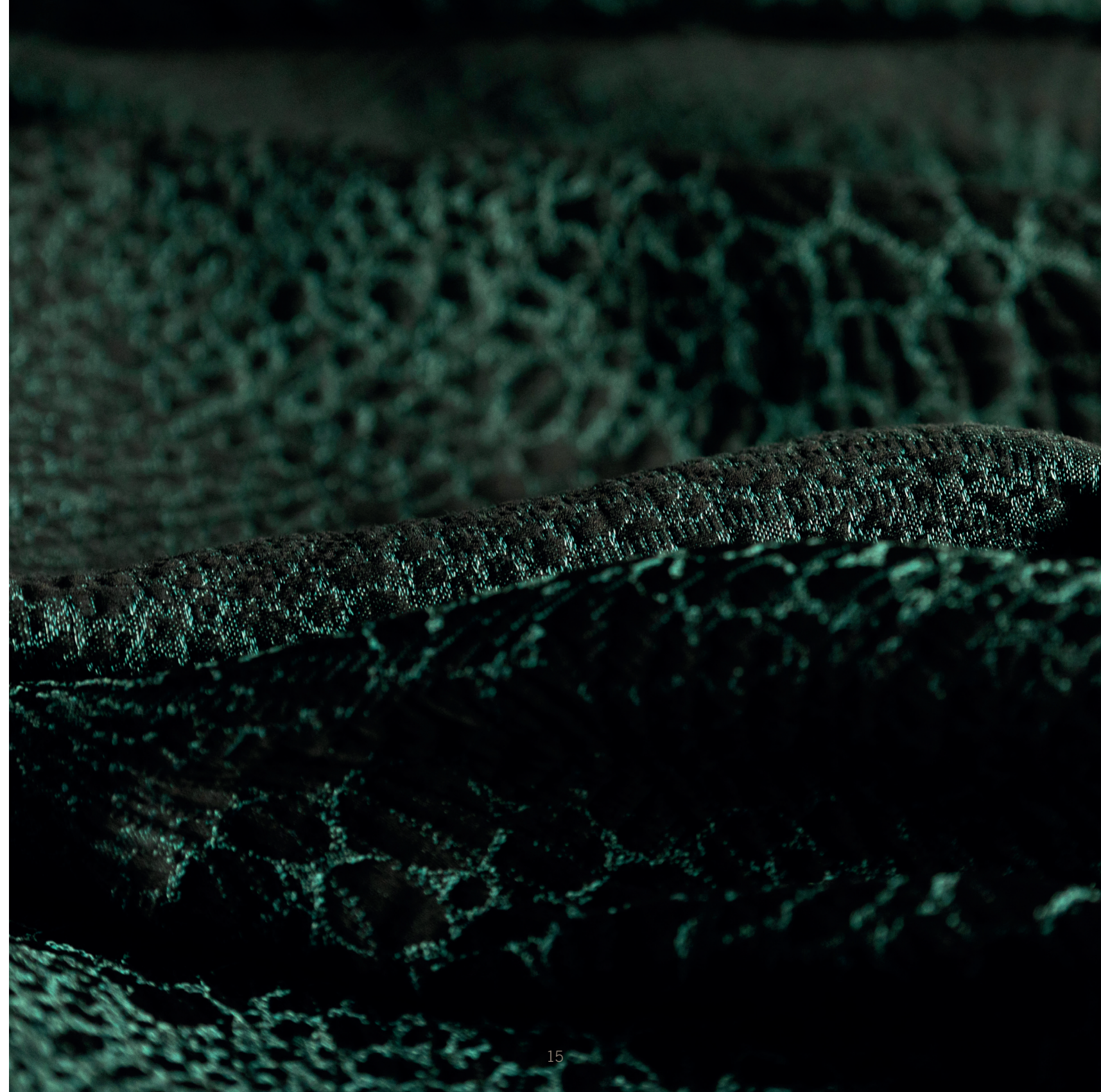
Inspired by tree elements - foliage, roots, bark covered in moss and lichen - they take advantage of precious and clever textile contributions such as linen in DENDRON, or chenille in UMBRA. Structures are lighter in TETHYS with its linen transparencies, more robust and resistant in the wool construction of SEQUOIA, but they always offer an innovative visual impact, thanks to bright colors such as burnt sienna. Patterns that trace lattices throbbing with vitality and capture reflections and hues, light, and 3D geometries are set in cottons for DEW, PHYLLOS, and PINE LIGHT. Silk, on the other hand, illuminates FJORD - recalling rocks, currents and glaciers - or ignites ATHABASKA's precious lampas jacquard, reminiscent of ancient ritual forest bonfires. The collection draws from the energy and balance of the forest to offer a cross-section of shapes, nuances and application purposes, where decorative accessories, drapes, curtains, bedding and upholstered items find new inspirations.



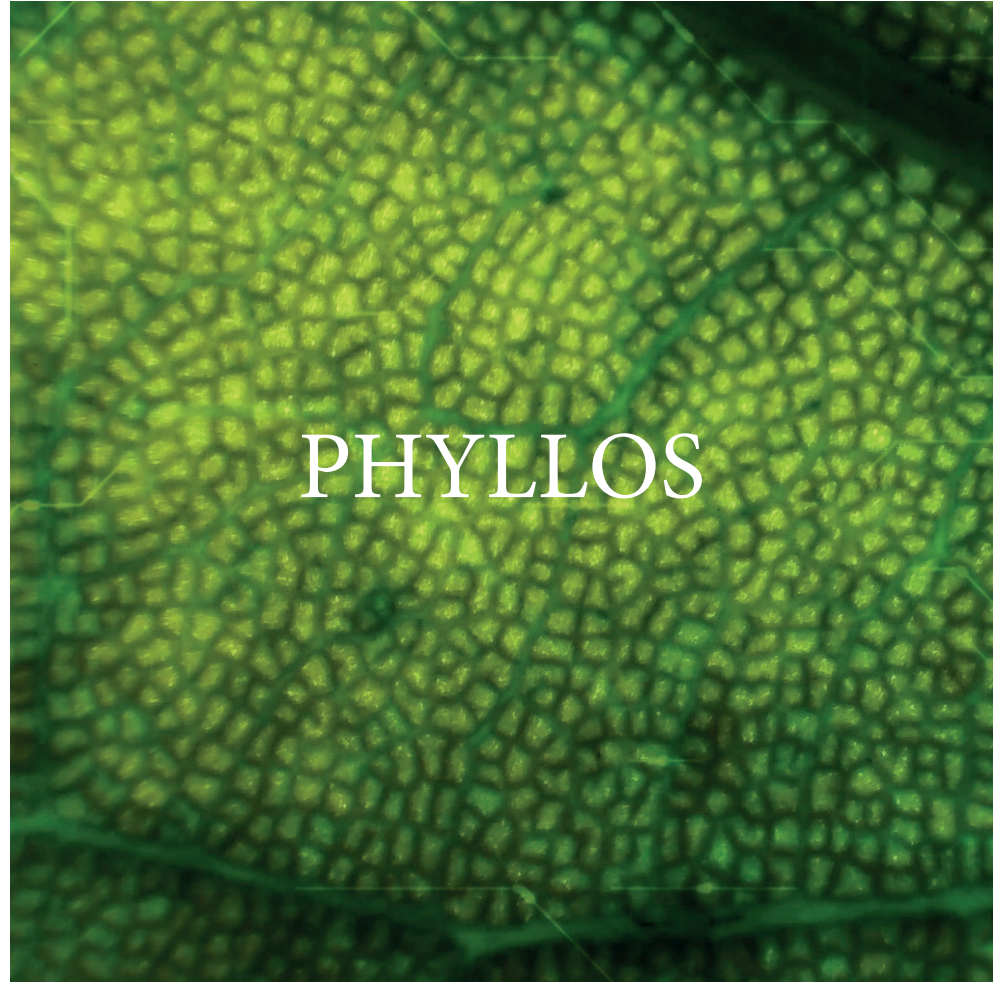




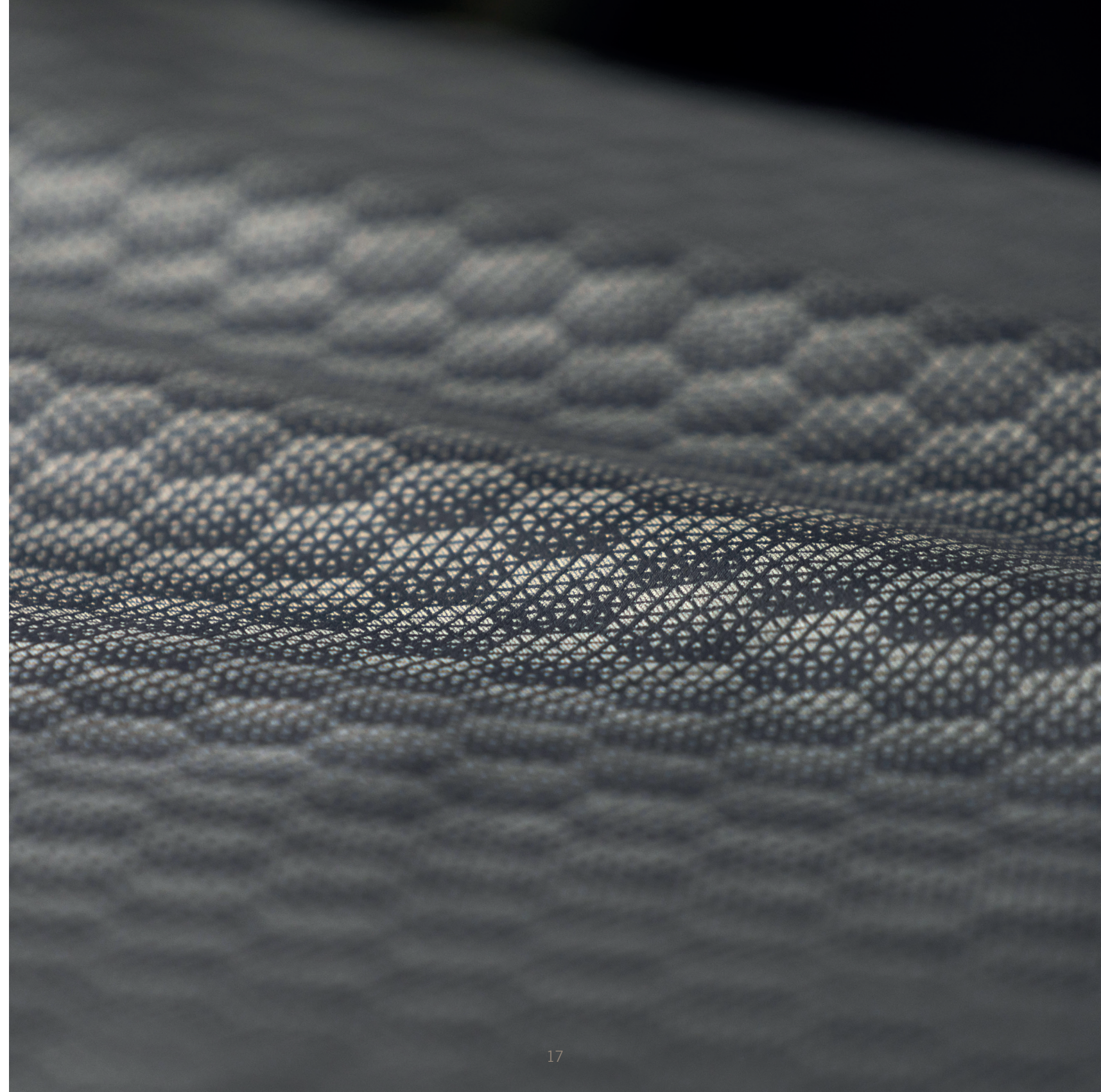


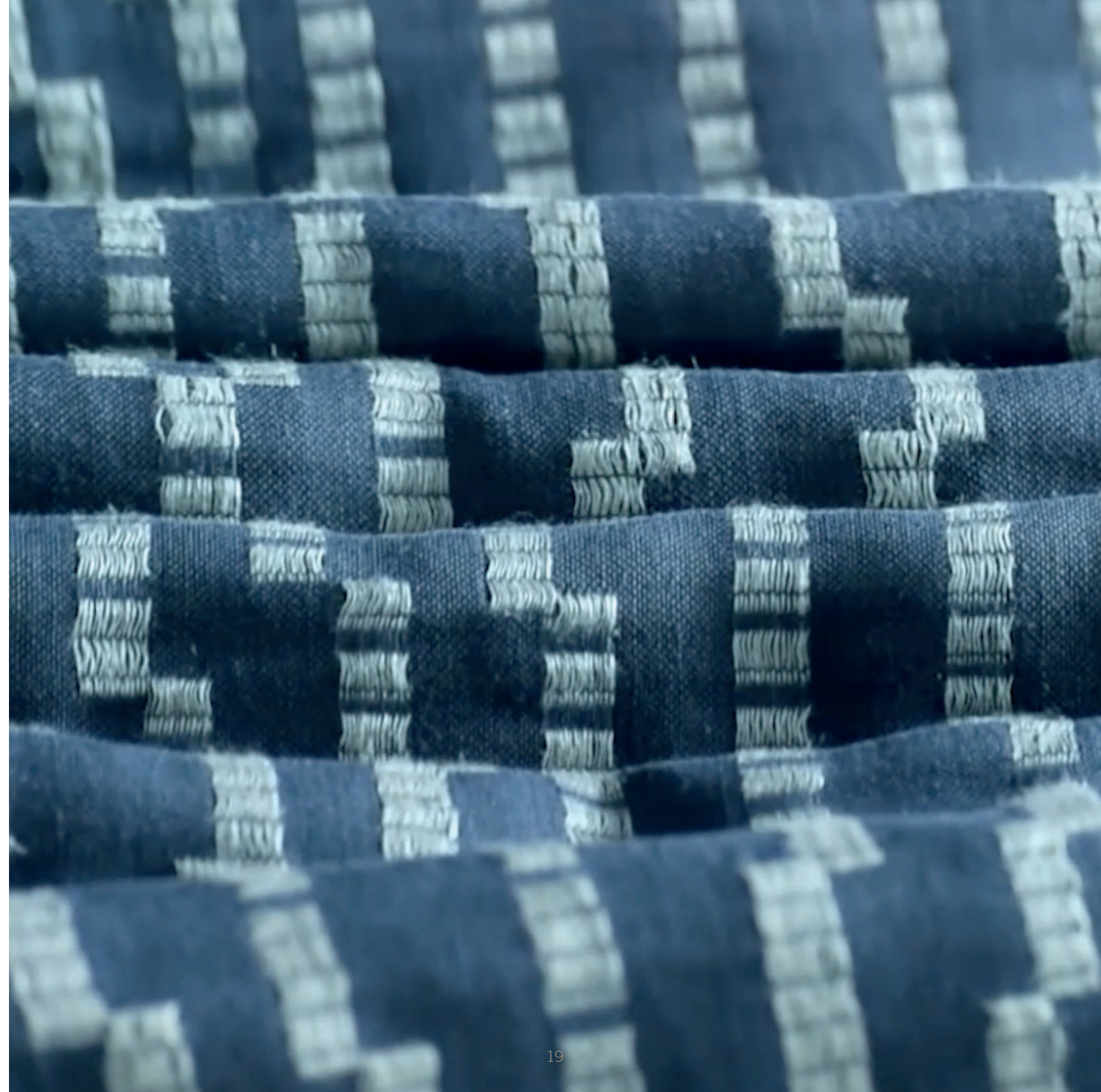


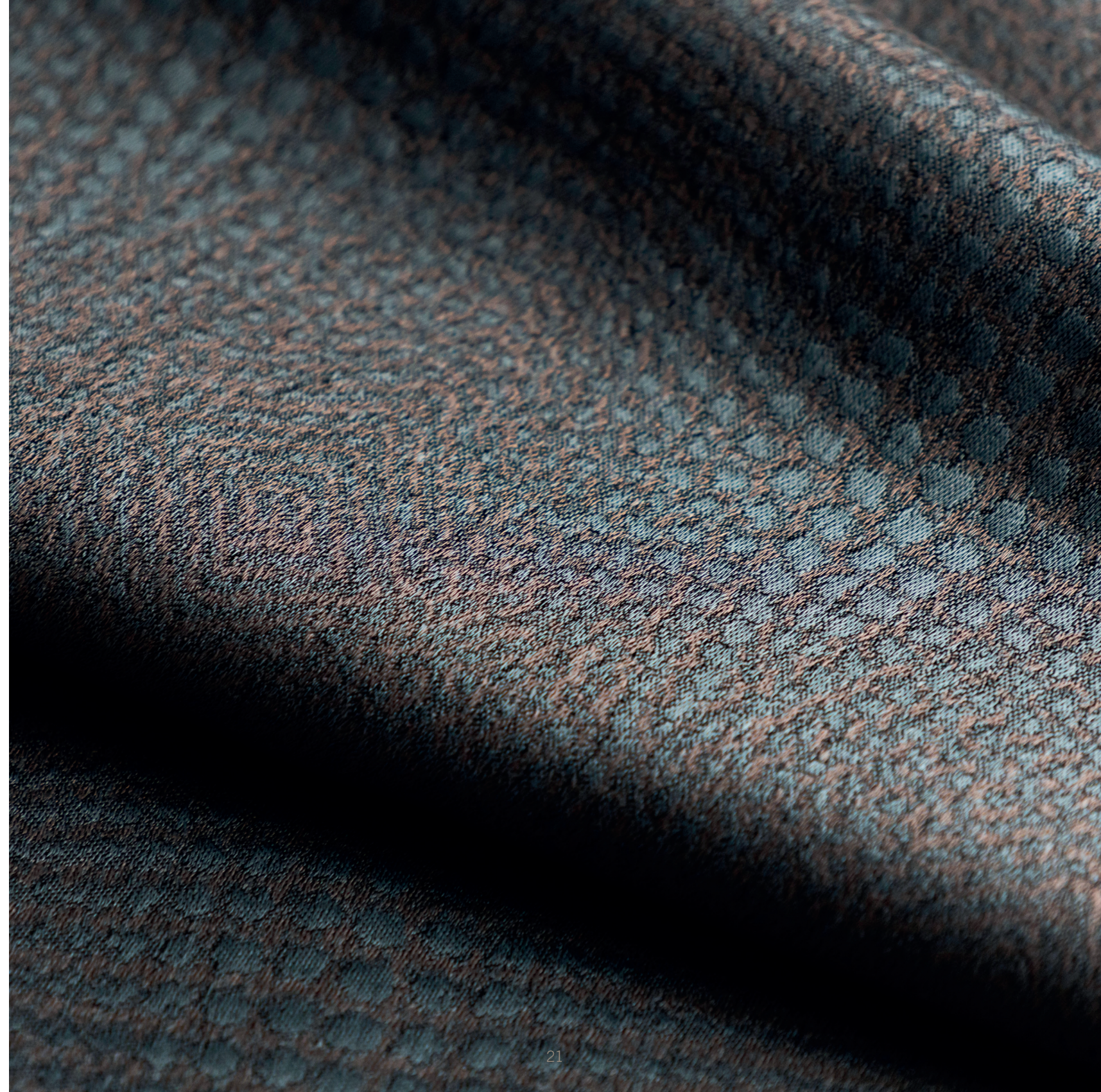




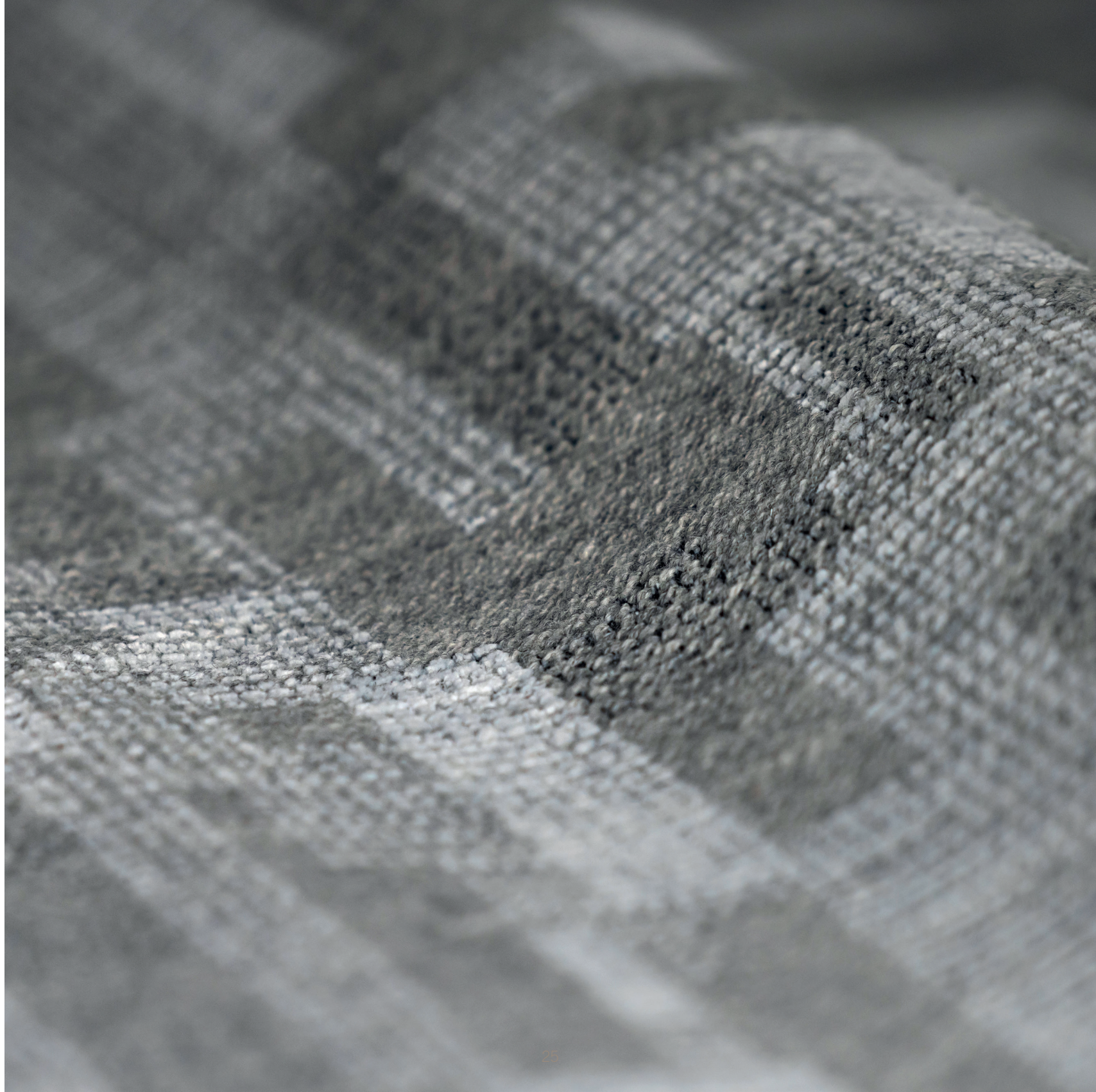
PHYLLOS













# The FOREST NETWORK



Pag. 06-07

## ATHABASKA

**Inspiration:** powders, metals, sparks in ancient fires and forest rituals

**Composition:** silk-and-cotton lampas jacquard

**Features:** bright and vibrant look

**Use:** duvet covers, sheets, drapes, accessories



Pag. 08-09

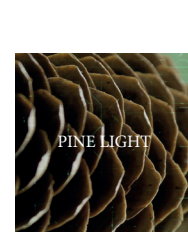
## FJORD

**Inspiration:** fjords and sea currents, vortices and whirlpools

**Composition:** silk-woven lampas jacquard

**Features:** iridescent, elegant and contemporary pattern

**Use:** bedding, accessories



## PINE LIGHT

**Inspiration:** resins on the surface of pine cones

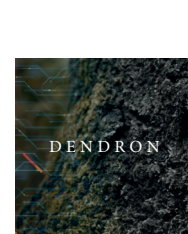
**Composition:** pure cotton lampas jacquard

**Features:** geometric pattern

**Use:** duvet covers, accessories



Pag. 10-11



## DENDRON

**Inspiration:** moss and lichens on tree barks and rocks

**Composition:** linen-cotton lampas jacquard

**Features:** cracked and irregular surface, three-dimensional effects

**Use:** accessories, bedspreads, cushions



Pag. 12-13



## PANTANAL

**Inspiration:** the largest flood plain in the world located in South America

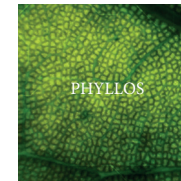
**Composition:** pure cotton pique

**Features:** matelassé lightweight structure, three-dimensional and contemporary look

**Use:** accessories, bedspreads, cushions



Pag. 14-15



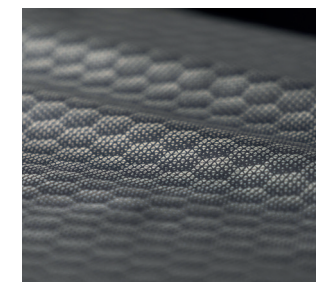
## PHYLLOS

**Inspiration:** subtle veins of leaves and chlorophyll biosynthesis

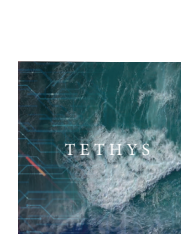
**Composition:** pure cotton double-colored jacquard

**Features:** reversible fabric

**Use:** sheets, bedspreads



Pag. 16-17



## TETHYS

**Inspiration:** the primordial ocean

**Composition:** linen mélange

**Features:** reversible fabric, light structure, vibrant appearance

**Use:** curtains



Pag. 18-19



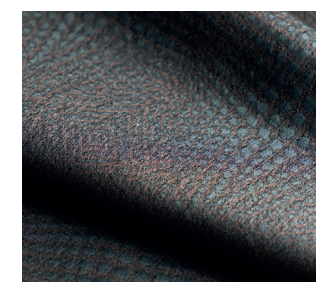
## DEW

**Inspiration:** precious geometric droplets

**Composition:** pure cotton

**Features:** reversible fabric, lozenge pattern

**Use:** duvet covers, accessories



Pag. 20-21



## UMBRA

**Inspiration:** shadows and lights in the forests

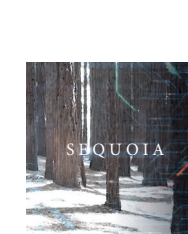
**Composition:** cotton enhanced by chenille yarns in different colors

**Features:** reversible, vibrant and glittery texture, three-dimensionality effect, soft, and iridescent look

**Use:** accessories, cushions



Pag. 22-23



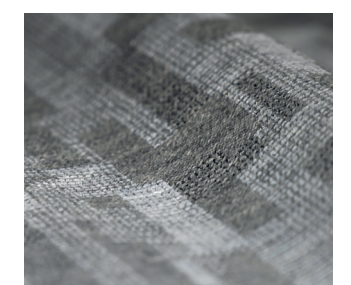
## SEQUOIA

**Inspiration:** sequoias giant trees

**Composition:** cotton and wool

**Features:** robust and structured fabric, contemporary patterns, pixelated look

**Use:** accessories



Pag. 24-25



marketing@kohro.it

phone: +39 035 741845

www.kohro.it



@kohroitaly



@kohroitaly



WeChat

